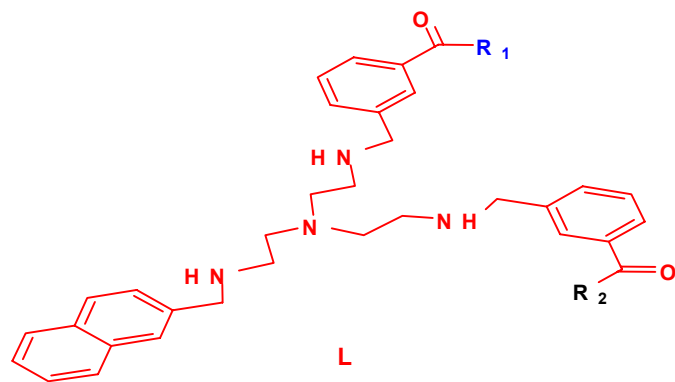
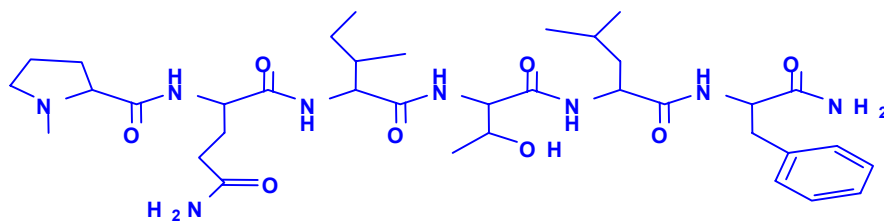


METAL ION-TUNABLE β -SHEET TEMPLATE

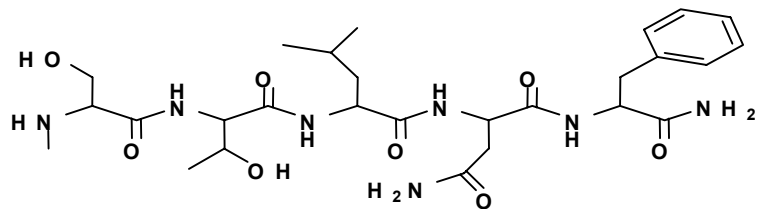


$R_1 =$



Pro-Gln-Ile-Thr-Leu-Phe (N)

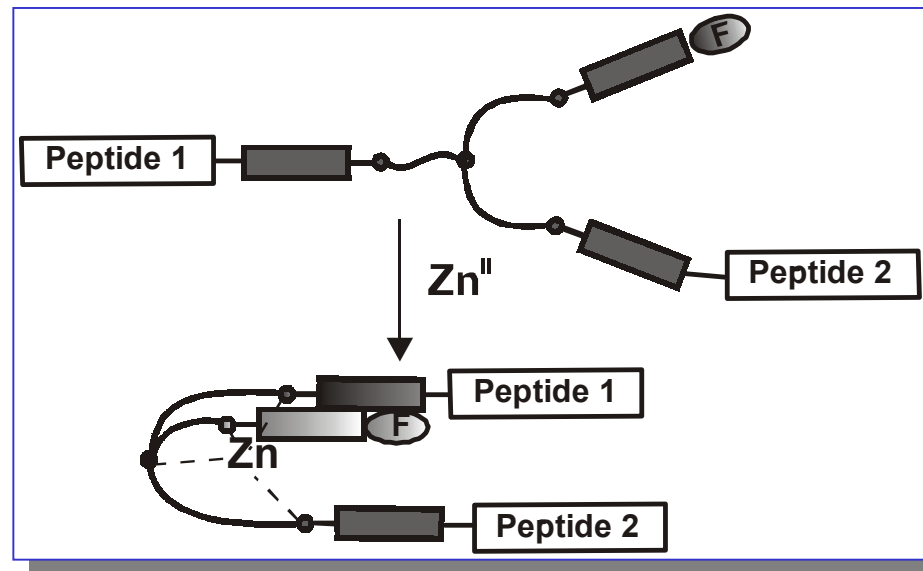
$R_2 =$



Ser-Thr-Leu-Asn-Phe (C)

Scrimin, Licini et al. Angew. Chem. Int. Ed. 2001, 40, 3902

**Zn(II) INDUCES A CONFORMATIONAL CHANGE:
allosteric regulation of activity**



Peptide template inhibits HIV-1 nuclease activity